

General Information

- Hourly rates available — min 2 hour rental
- Rooms are all fully accessible
- All rentals must provide their own refreshments
- Equipment provided: tables, chairs, A/V hookup, projection screen, podium and whiteboard
- Damage deposit \$100—fully refundable

Licenses Required

- Liquor Event License
- All rentals are subject to SOCAN fees (if applicable)

Liability Insurance

Liability insurance is required, minimum \$2,000,000 coverage, naming Abbotsford Cultural Centre (The Reach) and the City of Abbotsford as an additional insured parties.

Setup and Clean up

- Groups are responsible for setting up and taking down their own decorations and equipment
- Staffing costs for after hours events are additional
- Food is restricted to reception and the studios
- Use of tape, staples and tacks are not allowed anywhere in The Reach
- Throwing confetti or rice is not allowed

Equipment Available (nominal fee charged)

- A/V equipment including speakers and mic
- Flipcharts
- Data projector

For more information or to plan your event please contact The Reach 604-864-8087 Donna Dempsey (x116) or Karina Chow (x123) or info@thereach.ca

Check out www.thereach.ca for the Virtual 360 Tour and other facility information.



the reach
gallery museum abbotsford

facility rental

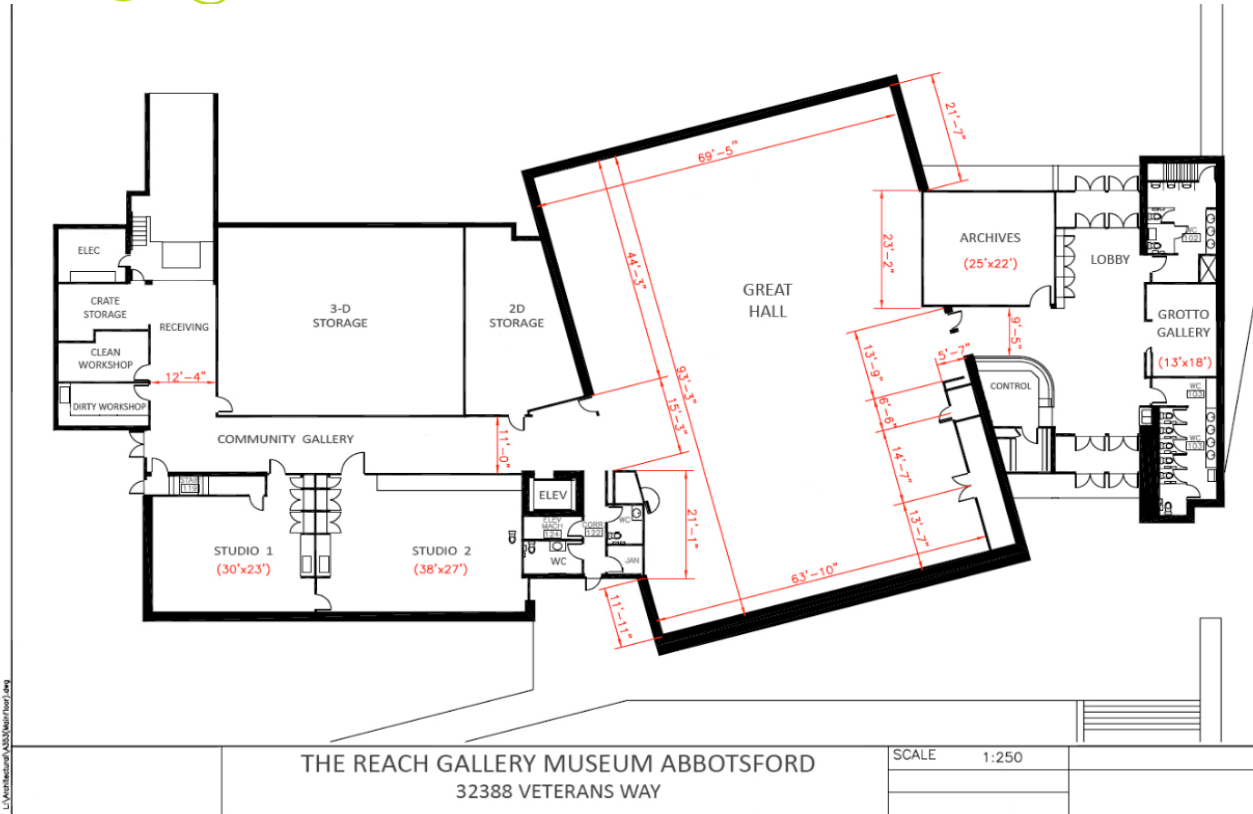


32388 Veterans Way
Abbotsford, BC
Near corner of Trethewey St
and South Fraser Way

**For rate information and to book
space call 604-864-8087**



the reach floorplan



the reach

Stage your next event at the The Reach a Leadership in Energy and Environmental Design (LEEDS) Building. Open since fall 2008, the dynamic and modern facility will make an immediate impression on your participants.

The Reach is a 20,000 square foot building that contains:
 6,100 square foot exhibition hall
 2 multi-purpose studios
 2 community exhibition spaces

Full building rental is available after normal hours and subject to conditions that protect our exhibitions and collections.



Room and Fee Information

	Studio 1	Studio 2	Studio 1 & 2	Building (after hours only)
Capacity	30 Classroom 40 Theatre	40 Classroom 60 Theatre	Dependent on configuration	200 Reception
General Groups 4 hour rental	\$100	\$150	\$200	\$500
Non-profit 4 hour rental	\$90	\$120	\$160	\$300
After Hours— additional staff costs	\$40/per hour			